

Discover ● Understand ● Apply



# BIBLE STUDY

**Romans 13:11-14**

SMALL GROUP SESSIONS

March 13- March 19, 2022



Kamuning Bible Christian Fellowship

# Romans 13:11-14

## Take Home Principle



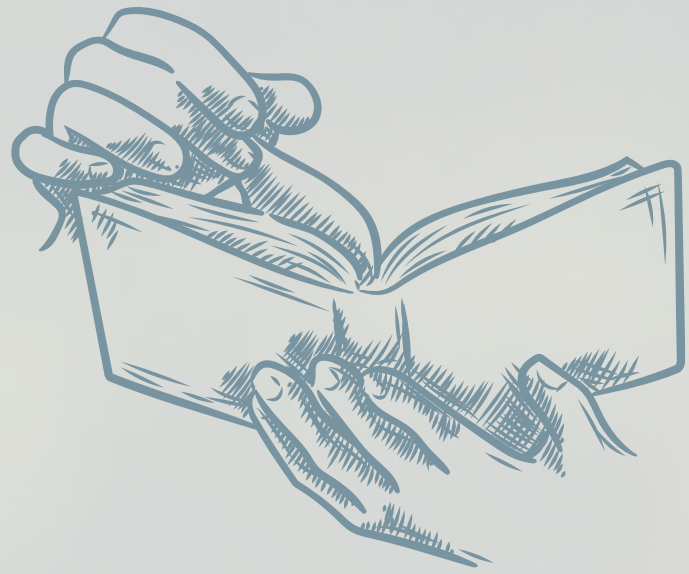
DISCOVERY  
QUESTIONS



UNDERSTANDING  
QUESTIONS



APPLICATION  
QUESTIONS

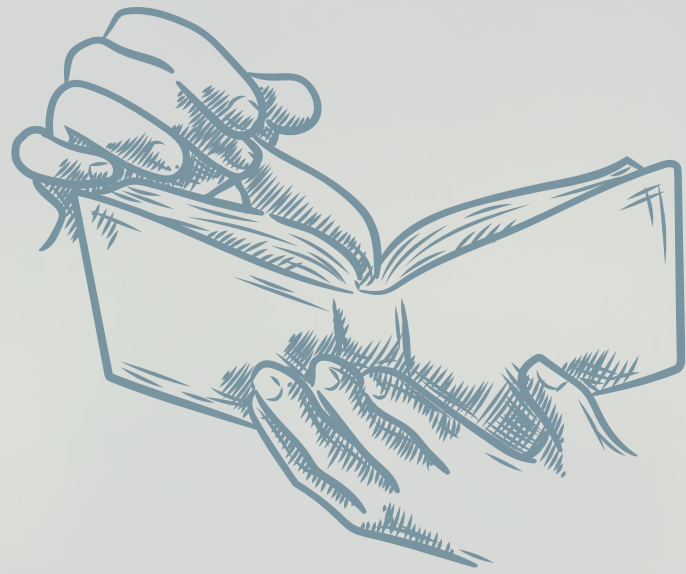


# Romans 13:11-14

New International Version (NIV)

## The Day is Near

11 And do this, understanding the present time: The hour has already come for you to wake up from your slumber, because our salvation is nearer now than when we first believed. 12 The night is nearly over; the day is almost here. So let us put aside the deeds of darkness and put on the armor of light.



# Romans 13:11-14

New International Version (NIV)

13 Let us behave decently, as in the daytime, not in carousing and drunkenness, not in sexual immorality and debauchery, not in dissension and jealousy. 14 Rather, clothe yourselves with the Lord Jesus Christ, and do not think about how to gratify the desires of the flesh.



# TAKE HOME PRINCIPLE

As I anticipate the Lord's return, I will commit to living a life of holiness every day, distinct from the ways of the world.

# QUESTION 1

What is Paul telling us to do in v.11?

**Romans 13:11-14**  
**DISCOVERY**  
**QUESTIONS**



# QUESTION 2

What do we need to put aside and then put on in v. 12?

**Romans 13:11-14**  
**DISCOVERY**  
**QUESTIONS**



# QUESTION 3

How should believers behave according to Paul? (v.13-14)

Romans 13:11-14  
**DISCOVERY  
QUESTIONS**





# QUESTION 1

Why do you think Paul is urging us to wake up now? What kind of sleep are we waking up from?

**Romans 13:11-14**

**UNDERSTANDING  
QUESTIONS**

# QUESTION 2

While Paul recognizes that many of us still struggle with sin, he can confidently admonish us to "set aside the deeds of darkness and put on the armor of light." Why?

**Romans 13:11-14**

**UNDERSTANDING  
QUESTIONS**

# QUESTION 3

What does 'to clothe ourselves with the Lord Jesus Christ mean?

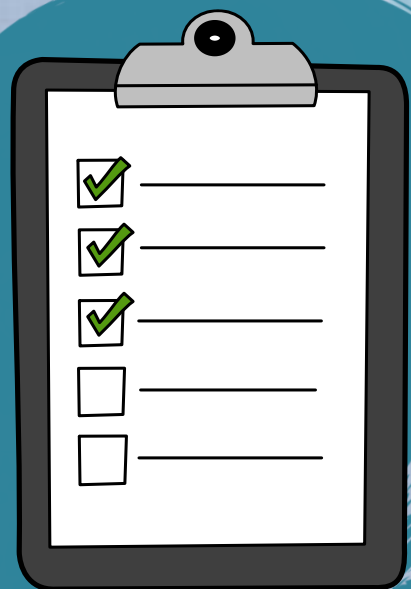
**Romans 13:11-14**

**UNDERSTANDING**

**QUESTIONS**

# QUESTION 1

Reflect on your life as a believer. Was there a time when you were unconcerned about matters eternal, exhausted in your walk with the Lord, or uninterested in your spiritual well-being? How did you wake up from your spiritual slumber? Share with others how you overcame (or are overcoming) that season in your life.

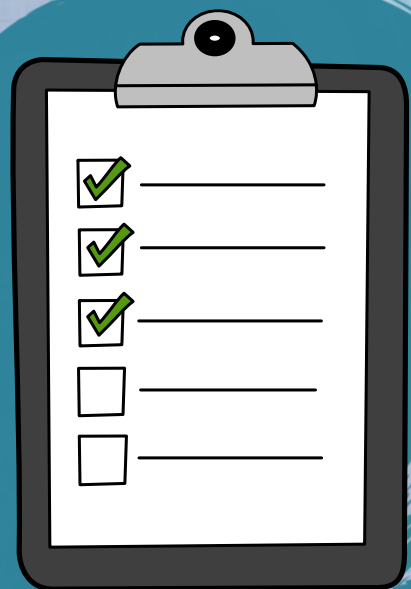


**Romans 13:11-14**

## APPLICATION QUESTIONS

# QUESTION 2

What are the things you do that are distinct or different from the ways of the world? What is still worldly? Share your answers with the group and end the session by praying for one another.



**Romans 13:11-14**

**APPLICATION  
QUESTIONS**

# Romans 13:11-14

## Take Home Principle



DISCOVERY  
QUESTIONS



UNDERSTANDING  
QUESTIONS



APPLICATION  
QUESTIONS



# TAKE HOME PRINCIPLE

As I anticipate the Lord's return, I will commit to living a life of holiness every day, distinct from the ways of the world.



Small Group Sessions  
**CLOSING PRAYER**





Discover ● Understand ● Apply



# BIBLE STUDY

**Romans 13:11-14**

SMALL GROUP SESSIONS  
SEE YOU NEXT WEEK



Kamuning Bible Christian Fellowship



# KBCF

 [kbcf.org.ph](http://kbcf.org.ph)  [KBCFofficial](#)  [KBCFamily](#)  [kbcf.office@gmail.com](mailto:kbcf.office@gmail.com)  [0917-886-6650](tel:0917-886-6650)  [8927-7420](tel:8927-7420) | [8928-6584](tel:8928-6584)