

Discover • Understand • Apply

BIBLE

STUDY

Ephesians 4:25-32

SMALL GROUP SESSIONS

June 05-June 11, 2022

 Kamuning Bible Christian Fellowship

GROWING
IN SANCTIFICATION



Ephesians 4:25-32

Take Home Principle



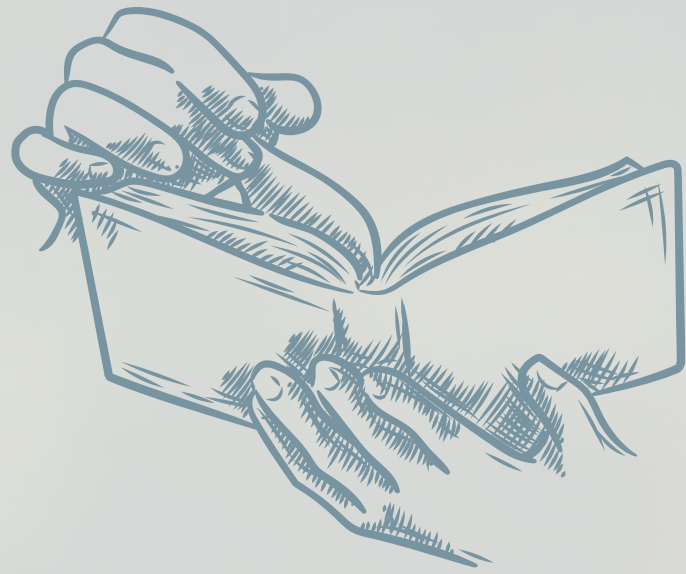
DISCOVERY
QUESTIONS



UNDERSTANDING
QUESTIONS



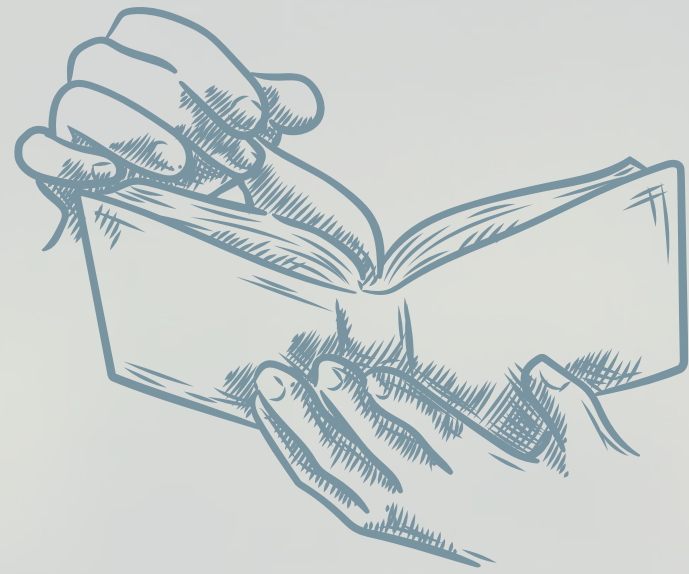
APPLICATION
QUESTIONS



Ephesians 4:25-32

New International Version (NIV)

25 Therefore each of you must put off falsehood and speak truthfully to your neighbor, for we are all members of one body. **26** "In your anger do not sin": Do not let the sun go down while you are still angry, **27** and do not give the devil a foothold.

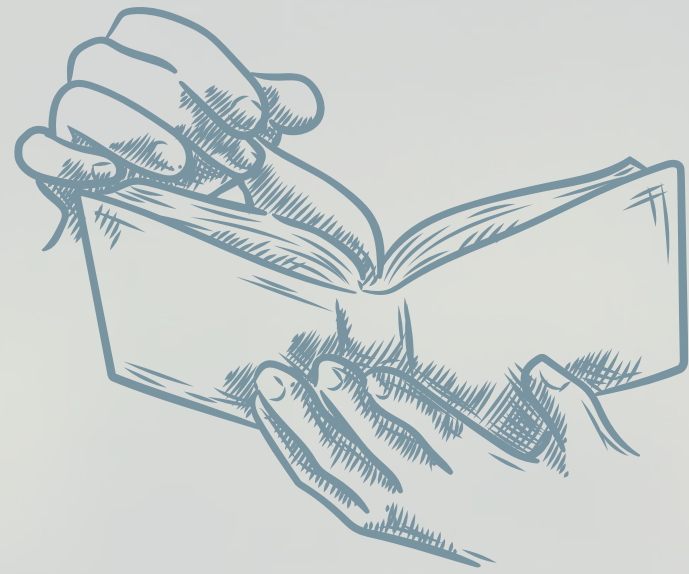


Ephesians 4:25-32

New International Version (NIV)

28 Anyone who has been stealing must steal no longer, but must work, doing something useful with their own hands, that they may have something to share with those in need.

29 Do not let any unwholesome talk come out of your mouths, but only what is helpful for building others up according to their needs, that it may benefit those who listen.



Ephesians 4:25-32

New International Version (NIV)

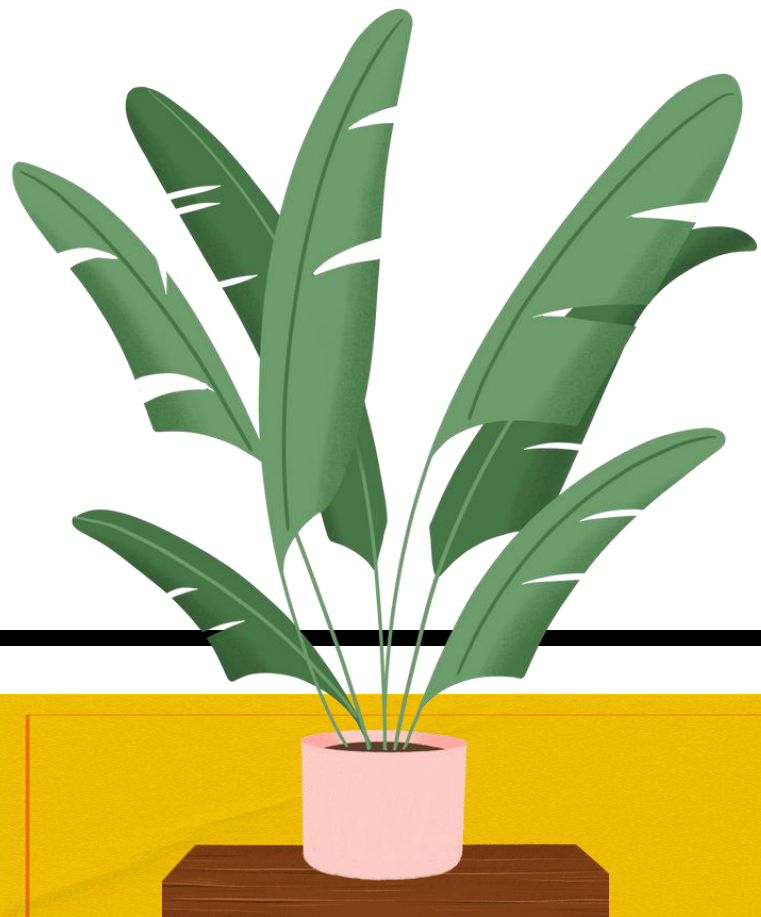
30 And do not grieve the Holy Spirit of God, with whom you were sealed for the day of redemption. **31** Get rid of all bitterness, rage and anger, brawling and slander, along with every form of malice.

32 Be kind and compassionate to one another, forgiving each other, just as in Christ God forgave you.



TAKE HOME PRINCIPLE

“I will live a righteous and holy life that is in accord with my new life in Jesus Christ and not with my old, sinful nature.”





DISCOVERY
QUESTIONS
Ephesians 4:25-32



QUESTION 1

The Apostle Paul admonished God's people in Ephesus about certain behaviors and attitudes that characterize their old, sinful nature, not befitting their new life as children of God. What are these?

QUESTION 2

What did Apostle Paul exhort them to do instead as renewed people in Christ?



DISCOVERY

QUESTIONS

Ephesians 4:25-32



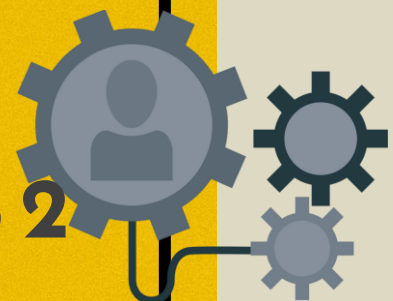
QUESTION 1

How may we grieve God's Holy Spirit?



UNDERSTANDING
QUESTIONS

Ephesians 4:25-32



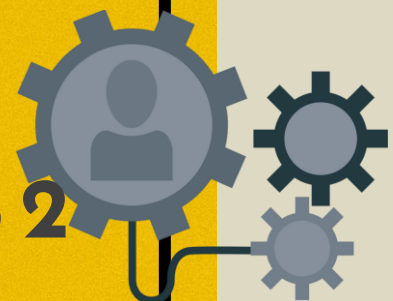
QUESTION 2

What happens to us if we continue to “wear” our sinful nature and grieve the Holy Spirit by the way that we live?



UNDERSTANDING
QUESTIONS

Ephesians 4:25-32



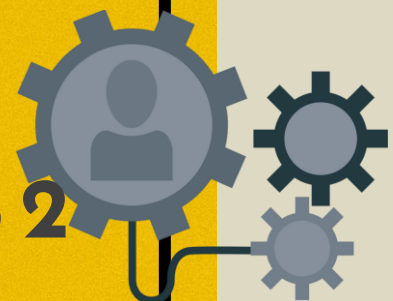
QUESTION 3

Why do you think is it important for us to live transformed lives?

Recommended reading: Grieving the Holy Spirit. Sermon by Charles H. Spurgeon on October 9, 1859. Retrieved from www.spurgeon.org

UNDERSTANDING
QUESTIONS

Ephesians 4:25-32





QUESTION 1

Describe your old self and your old life, and your new self in the new way of life that you learned from Jesus Christ. Praise God for how He is changing you through the Holy Spirit to become more and more Christ-like.

APPLICATION
QUESTIONS

Ephesians 4:25-32





QUESTION 2

Are you in a state of backsliding and spiritual coldness? Our daily struggle with our sinful nature is real. What steps do/can you take daily to help you throw off your sinful nature and live a righteous and holy life?

APPLICATION
QUESTIONS

Ephesians 4:25-32



CHALLENGE

Memorize 2 Corinthians 5:17 - "This means that anyone who belongs to Christ has become a new person. The old life is gone; a new life has begun!" (NLT); and Galatians 2:20 - "I have been crucified with Christ. It is no longer I who live but Christ who lives in me. And the life I now live in the flesh I live by faith in the Son of God who loved me and gave Himself for me" (NIV). Declare these verses whenever you are being tempted to go back to your old self and revert to your old way of life.



CHALLENGE

Ephesians 4:25-32

Take Home Principle



DISCOVERY
QUESTIONS



UNDERSTANDING
QUESTIONS

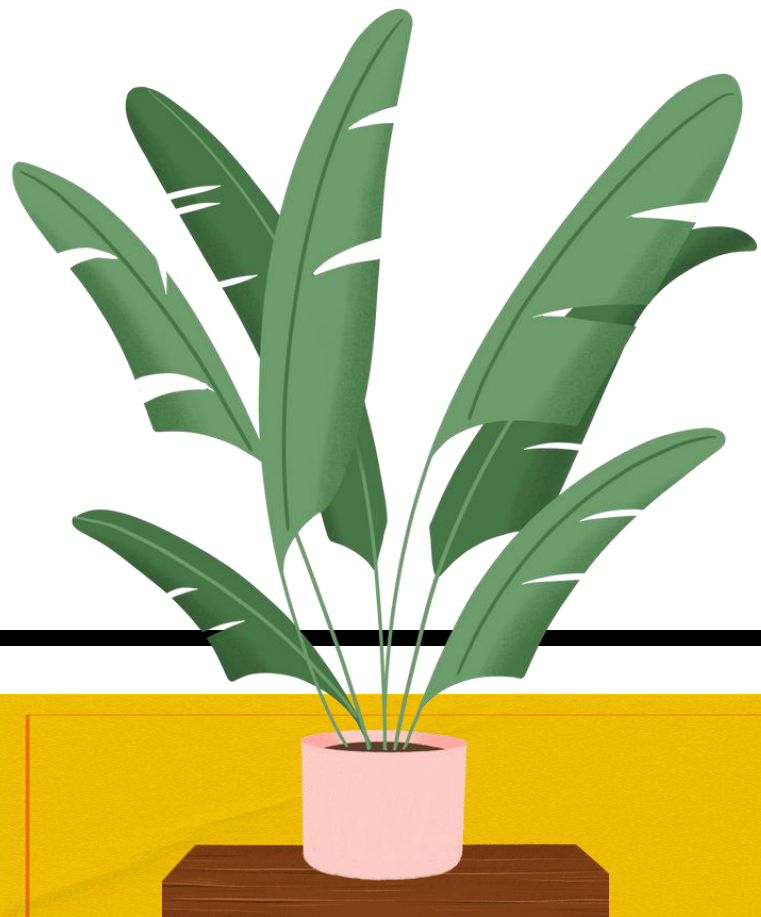


APPLICATION
QUESTIONS



TAKE HOME PRINCIPLE

“I will live a righteous and holy life that is in accord with my new life in Jesus Christ and not with my old, sinful nature.”





Small Group Sessions
CLOSING PRAYER



Discover • Understand • Apply

BIBLE STUDY

Ephesians 4:25-32

SMALL GROUP SESSIONS

See You Next Week!



Kamuning Bible Christian Fellowship

GROWING
IN SANCTIFICATION





KBCF

 kbcf.org.ph  [KBCFofficial](#)  [KBCFamily](#)  kbcf.office@gmail.com  [0917-886-6650](tel:0917-886-6650)  [8927-7420](tel:8927-7420) | [8928-6584](tel:8928-6584)