

Discover • Understand • Apply

# BIBLE STUDY

## Romans 6:19-23

SMALL GROUP SESSIONS  
June 26–July 02, 2022

 Kamuning Bible Christian Fellowship

GROWING  
IN SANCTIFICATION



# Romans 6:19-23

Take Home Principle



DISCOVERY  
QUESTIONS



UNDERSTANDING  
QUESTIONS



APPLICATION  
QUESTIONS



# Romans 6:19-23

New International Version (NIV)

**19** I am using an example from everyday life because of your human limitations. Just as you used to offer yourselves as slaves to impurity and to ever-increasing wickedness, so now offer yourselves as slaves to righteousness leading to holiness. **20** When you were slaves to sin, you were free from the control of righteousness.



# Romans 6:19-23

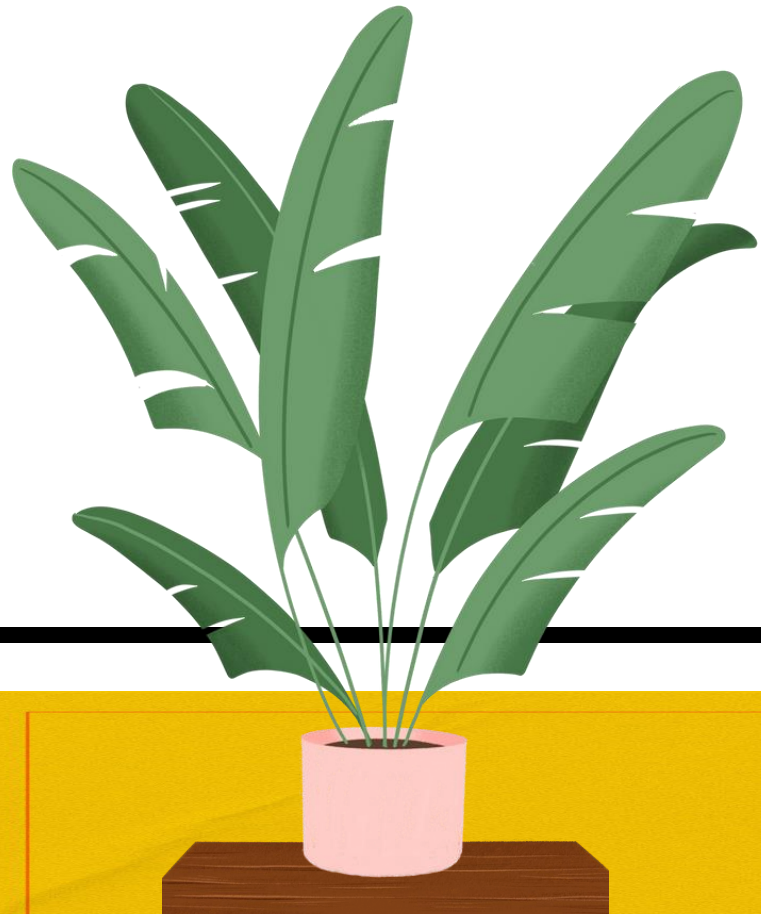
New International Version (NIV)

**21** What benefit did you reap at that time from the things you are now ashamed of? Those things result in death! **22** But now that you have been set free from sin and have become slaves of God, the benefit you reap leads to holiness, and the result is eternal life. **23** For the wages of sin is death, but the gift of God is eternal life in[a] Christ Jesus our Lord.



# TAKE HOME PRINCIPLE

“By the grace of God, I will  
strive to live a righteous and  
holy life.”





# QUESTION 1

What is the fruit (or end result) of being a slave to sin as contrasted with that of being a slave to God (V.19 & V.22-23)

**DISCOVERY  
QUESTIONS**  
*Romans 6:19-23*





## QUESTION 2

How did Paul describe the life of someone who is enslaved by sin? (V. 20 & 21)

**DISCOVERY  
QUESTIONS**  
*Romans 6:19-23*



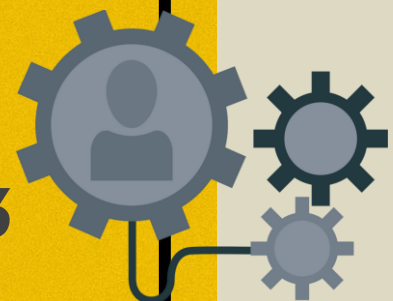
# QUESTION 1

What was Paul trying to imply on verse 19?



UNDERSTANDING  
QUESTIONS

*Romans 6:19-23*





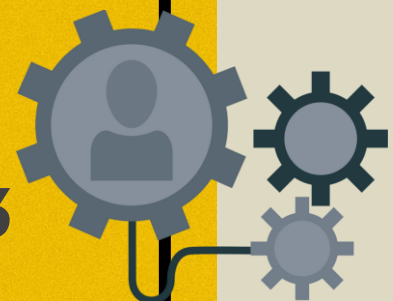
# QUESTION 2

What is the author trying to impart to the Romans in relation to overcoming sin? (V.23)



UNDERSTANDING  
QUESTIONS

*Romans 6:19-23*



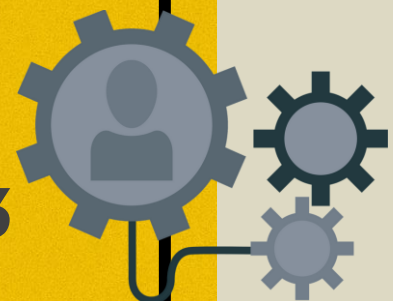
# QUESTION 3

What are the contrasts that make God's salvation incredible (Romans 6:23)?



UNDERSTANDING  
QUESTIONS

*Romans 6:19-23*





## APPLICATION QUESTIONS

*Romans 6:19-23*



# QUESTION 1

Our passage today teaches that all people are either slaves to sin or slaves to obedience (toward God) and righteousness. How is this different from how most of us view our lives? In view of that, how would you classify your life?



## APPLICATION QUESTIONS

*Romans 6:19-23*



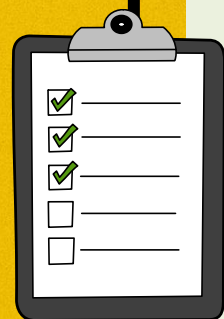
# QUESTION 2

Have you ever been in a situation where you were asked or required to do something you knew would not glorify God or force you to compromise your convictions? What happened and how did you face it?



## APPLICATION QUESTIONS

*Romans 6:19-23*



# QUESTION 3

As a group, allow each one to reflect and ponder on the following: things that you a.) are being faithful to God with, and; b.) need to hand over to God and simply be faithful to Him with?

# Romans 6:19 - 23

Take Home Principle



DISCOVERY  
QUESTIONS



UNDERSTANDING  
QUESTIONS



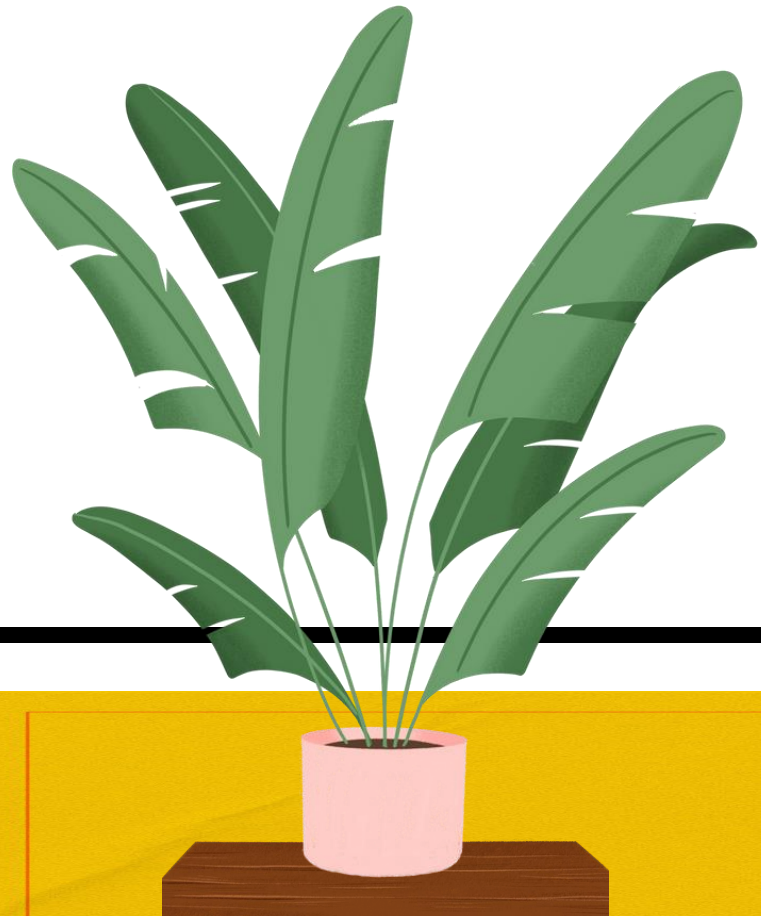
APPLICATION  
QUESTIONS





# TAKE HOME PRINCIPLE

“By the grace of God, I will  
strive to live a righteous and  
holy life.”





Small Group Sessions  
**CLOSING PRAYER**





Discover • Understand • Apply

# BIBLE STUDY

## Romans 6:19-23

SMALL GROUP SESSIONS  
See You Next Week!

 Kamuning Bible Christian Fellowship

GROWING  
IN SANCTIFICATION





# KBCF

 [kbcf.org.ph](http://kbcf.org.ph)  [KBCFofficial](#)  [KBCFamily](#)  [kbcf.office@gmail.com](mailto:kbcf.office@gmail.com)  [0917-886-6650](tel:0917-886-6650)  [8927-7420](tel:8927-7420) | [8928-6584](tel:8928-6584)