

Sep 18-24

# Bible Study

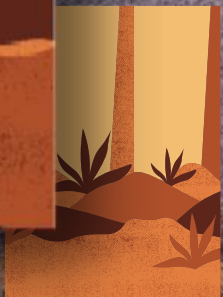
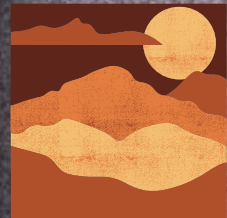
Small Group  
Sessions

Mark 1:35-39

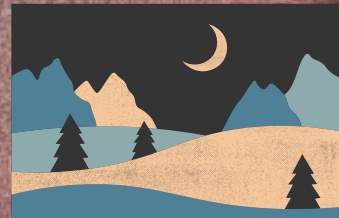
Discovery Understanding Application

# Mark 1:35-39

Take Home Principle



**Discovery**  
Questions



**Understanding**  
Questions



**Application**  
Questions



# Mark 1:35-39

New International Version

## **Jesus Prays in a Solitary Place**

35 Very early in the morning, while it was still dark, Jesus got up, left the house and went off to a solitary place, where he prayed. 36 Simon and his companions went to look for him, 37 and when they found him, they exclaimed: "Everyone is looking for you!"



# Mark 1:35-39

New International Version

38 Jesus replied, "Let us go somewhere else—to the nearby villages—so I can preach there also. That is why I have come." 39 So he traveled throughout Galilee, preaching in their synagogues and driving out demons.

# Take-Home Principle

*"I will live a changed life  
and take part in missions  
as Jesus' has  
commanded."*





# Question 1



*What was the first order of the day in Jesus' life? (v. 35)*

**Discovery**

Questions

Mark 1:35–39



# Question 2



*How was Jesus' ministry in Galilee characterized?*

**Discovery**

Questions

Mark 1:35–39



# Question 3



*What was Jesus' strategy in preaching the Gospel of God? (v. 38-39). Aside from preaching, what else did Jesus do? (v. 39b)*

**Discovery**

Questions

Mark 1:35-39





# Question 1



*Why was Jesus' focused on his main ministry and was not distracted by the immediate demands and pressure of the needs of people?*

Understanding

Questions

Mark 1:35–39



# Question 2

*How did Jesus accomplish his ministry?*



**Understanding**

Questions

Mark 1:35–39



# Question 1



*How can you be a disciple of Jesus who is involved in God's mission to reach a lost and needy world? (A personal look or self evaluation)*

*A. How is your prayer or devotional life?*

*B. Are you sharing your life testimony or living a changed life and sharing the Good News of God's salvation with your family, friends, classmates or co-workers or with other contacts? If not, why not?*

**Application**

Questions

Genesis 33: 1-16



# Question 1



*How can you be a disciple of Jesus who is involved in God's mission to reach a lost and needy world? (A personal look or self evaluation)*

*C. Are you living a life that is aligned to God's purpose on earth and with humankind? (Note: Our God is a God of Missions. He sent Jesus as a Missionary from heaven to humankind to save the lost and be with Him in eternity. The Bible is not just a handbook for living but is a book that let's us understand what God's plan is and how we should work with him." (Excerpt from Ralph Winter's article: The Abraham Connection in Kairos Reader, 4th Edition).*

**Application**

Questions

Genesis 33: 1-16



*Additional Exercise: Take this brief \*Questionnaire on Discovering Your Role in Missions. Answer it as quickly as you can then summarize the result. Where did you score most?*

*Please refer to the "Discover Your Role in Missions.pdf" file that you can download from the DUA Page.*

**Application**  
Questions

Mark 1:35-39



*a). What role in missions is God calling you to? Are you an Intercessor? A Sender/Encourager/Coach/Discipler of other brethren in the church to grow and be involved in God's mission work? Or are you a Goer? (the Holy Spirit is prompting you to "Go" to a mission field or mission work? What steps will you take now?)*

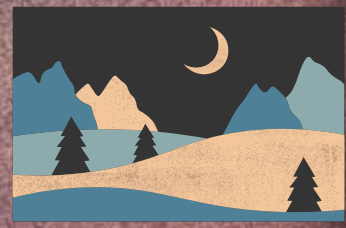
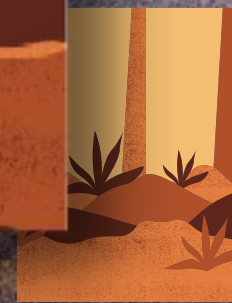
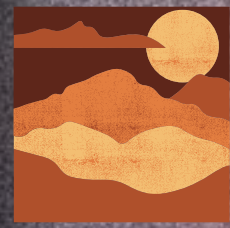
# Application

## Questions

Mark 1:35-39

# Mark 1:35-39

Take Home Principle



**Discovery**  
Questions

**Understanding**  
Questions

**Application**  
Questions

# Take-Home

## Principle

*"I will live a changed life  
and take part in missions  
as Jesus' has  
commanded."*





Small Group Session



# Closing Prayer



# Bible Study

Mark 1:35–39

Discovery Understanding Application

See You Next Week!



KBCF



# KBCF

#4 11th Jamboree Street, Sacred Heart, Quezon City, Philippines

Worship Service Schedule: 9am  
Livestream: Facebook and YouTube



[kbcf.org.ph](http://kbcf.org.ph)



[KBCFofficial](#)



[KBCFamily](#)



[kbcf.office@gmail.com](mailto:kbcf.office@gmail.com)



[0917-886-6650](tel:0917-886-6650)



[8927-7420](tel:8927-7420) | [8928-6584](tel:8928-6584)