

# BIBLE

## STUDY

**1 Samuel 15:17-23**

November 12-18

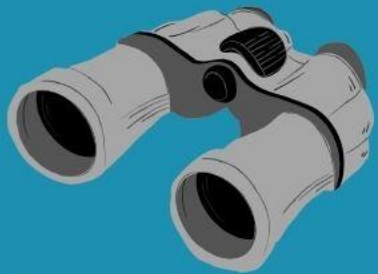
Discovery Understanding Application



The  
**COMPLETE**  
**OBEDIENCE**  
of the Followers of  
**JESUS**

# Take Home Principle

1 Samuel 15:17-23



**Discovery**  
Questions



**Understanding**  
Questions



**Application**  
Questions

# 1 Samuel 15: 17–23

New International Version (NIV)



17 Samuel said, “Although you were once small in your own eyes, did you not become the head of the tribes of Israel? The Lord anointed you king over Israel. 18 And he sent you on a mission, saying, ‘Go and completely destroy those wicked people, the Amalekites; wage war against them until you have wiped them out.’ 19 Why did you not obey the Lord? Why did you pounce on the plunder and do evil in the eyes of the Lord?”

# 1 Samuel 15: 17–23

New International Version (NIV)

20 “But I did obey the Lord,” Saul said. “I went on the mission the Lord assigned me. I completely destroyed the Amalekites and brought back Agag their king. 21 The soldiers took sheep and cattle from the plunder, the best of what was devoted to God, in order to sacrifice them to the Lord your God at Gilgal.”



# 1 Samuel 15: 17–23

New International Version (NIV)



22 But Samuel replied:

“Does the Lord delight in burnt offerings and sacrifices as much as in obeying the Lord?


To obey is better than sacrifice,

and to heed is better than the fat of rams.

23 For rebellion is like the sin of divination,

and arrogance like the evil of idolatry.

Because you have rejected the word of the Lord,  
he has rejected you as king.”



“I will listen closely  
to God and obey  
Him completely  
and without  
reservation.”

Take Home  
**Principle**

# What was God's mission for King Saul?



**Discovery**  
Questions **1**  
1 Samuel 15:17-23

How did Saul carry  
out God's mission?  
And what was God's  
response to Saul's  
execution of this  
mission?



**Discovery**

Questions

1 Samuel 15:17-23

**2**



What sins did Samuel compare rebellion and arrogance to, respectively? (v.22b)

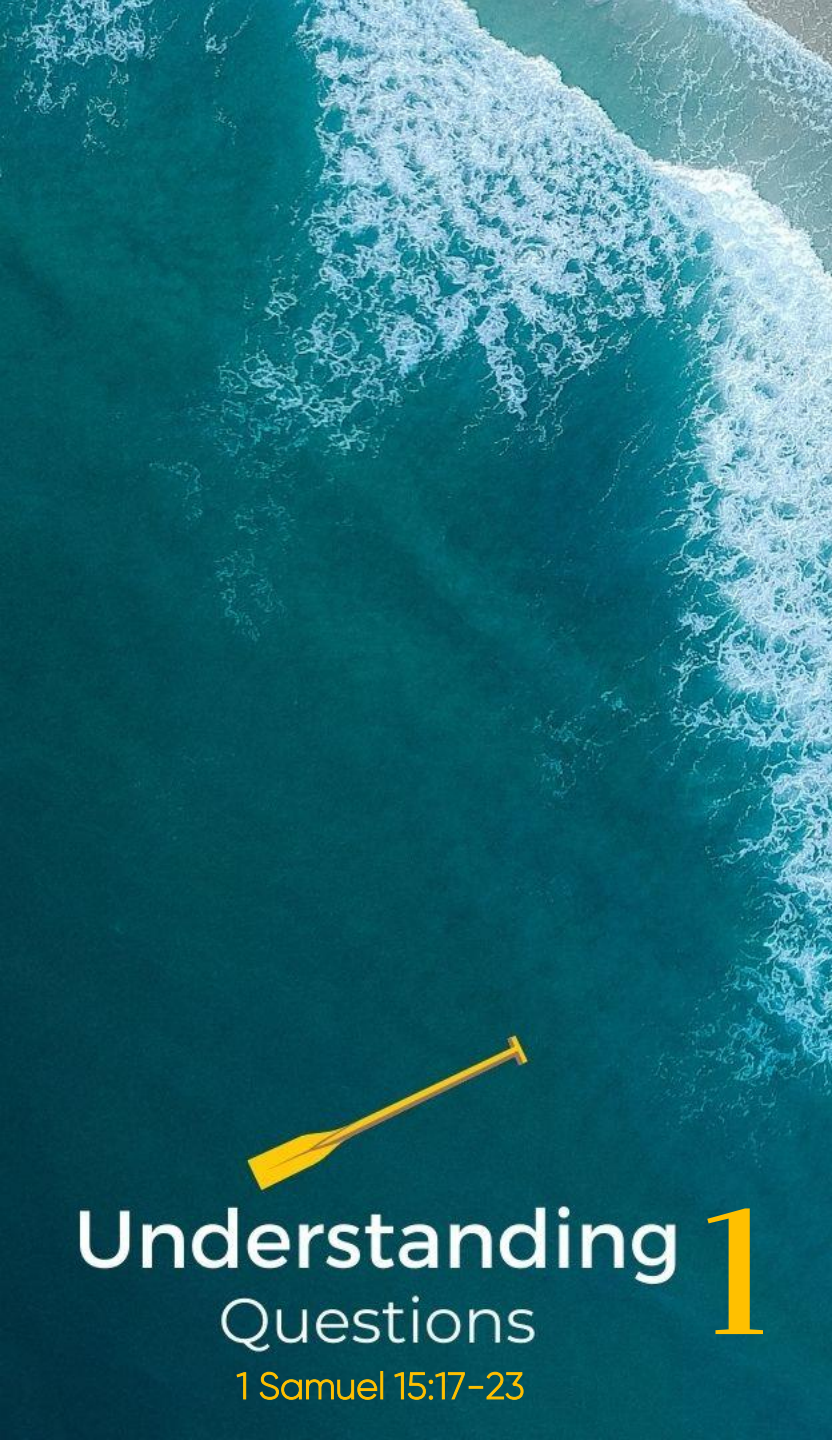


**Discovery**

Questions

1 Samuel 15:17-23


**3**



This was Samuel's response to Saul's actions and reasoning with him in v.22a: "Does the Lord take pleasure in burnt offerings and sacrifices as much as he does in obedience? Certainly, obedience is better than sacrifice; paying attention is better than the fat of rams." (NET 1 Samuel 15:22)). What did he mean by this statement?

Why was King Saul considered disobedient in the passage? What counts as disobedience in the sight of God?





# Why did God "grieve" and reject Saul as King over Israel?



Understanding **3**  
Questions

1 Samuel 15:17-23

What steps can we take to ensure that we are closely/attentively listening to God?



**Application** 1  
Questions  
1 Samuel 15:17-23

Have you found yourself struggling to obey God because what He is asking is in opposition to your convictions or beliefs? (See Samuel 15:9) Share how God led you to completely submit your own will in obedience to Him.



Application **2**  
Questions  
1 Samuel 15:17-23

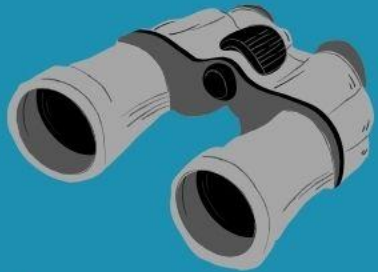
How do your acts of worship measure up to your level of complete obedience and submission to God? How can you improve? Pray for one another.



**Application** 3  
Questions  
1 Samuel 15:17-23

# Take Home Principle

1 Samuel 15:17-23



**Discovery**  
Questions




**Understanding**  
Questions



**Application**  
Questions





“I will listen closely  
to God and obey  
Him completely  
and without  
reservation.”

Take Home  
**Principle**

**Closing Prayer**

# BIBLE

## STUDY

1 Samuel 15:17-23

See You Next Week

Discovery Understanding Application



The  
**COMPLETE**  
**OBEDIENCE**  
of the Followers of  
**JESUS**



# KBCF

#4 11th Jamboree Street, Sacred Heart, Quezon City, Philippines

Worship Service Schedule: 9am

Livestream: Facebook and YouTube



[kbcf.org.ph](http://kbcf.org.ph)



[KBCFofficial](#)



[KBCFamily](#)



[kbcf.office@gmail.com](mailto:kbcf.office@gmail.com)



0917-886-6650



8927-7420 | 8928-6584